

ALARM GENERATOR

TECHNICAL MANUAL
DYNALEC PART

DIS 61601-000
61601-000

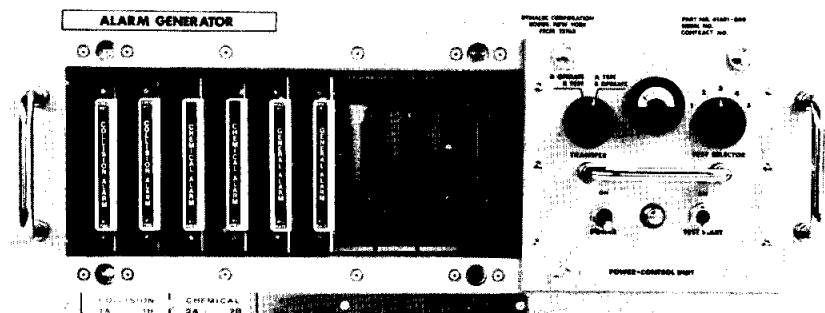
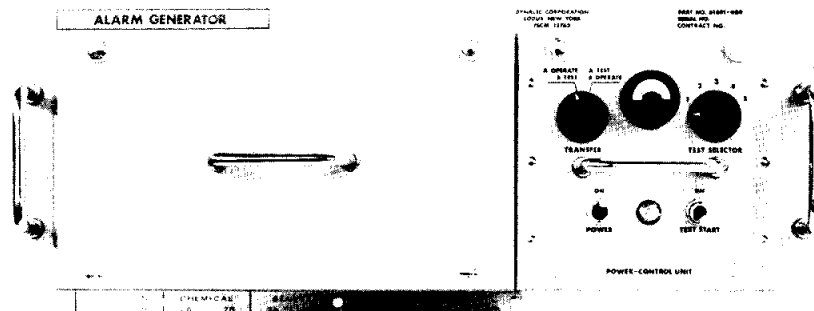
FEATURES

- Adds the alarm generator capability to the Amplifier-Control Group AN/SIA-120B
- Compact design provides for up to five alarm modules and power control unit with all operator and test controls.
- Alarm modules are plug-in type for easy removal.
- Unit contains three alarms with three redundant ones.
- Redundancy of alarm modules allows for internal testing while the system remains in service. A transfer switch sets up the test/operation mode.
- Generator is operated from the front panel. The left side contains the alarm modules. The operating controls are located on the right side.
- Each alarm module has controls to be used for maintenance adjustment.
- Standard alarms: **Collision Alarm:** Three short 1000 Hz bursts followed by equal off time and repeated.
General Alarm: Simulated gong tone signal.
Chemical Alarm: A steady 1000 Hz tone.
- Unit is panel-mounted and designed to fit into the standard 19-inch electronic equipment rack.
- Special tone alarm generator modules are available on order.

RELATED EQUIPMENT

Amplifier Control Group AN/SIA-120B

DYNALEC PART 60555-000



ALARM GENERATOR

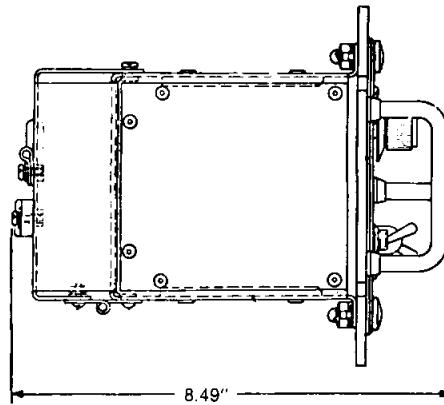
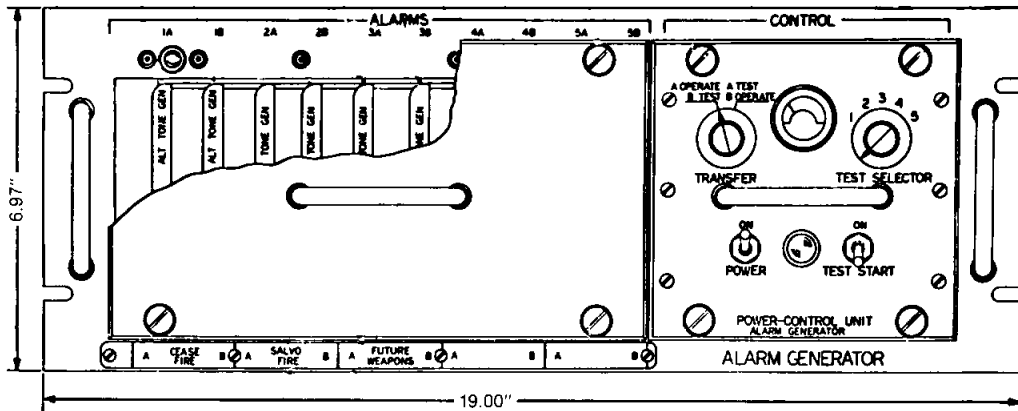
DESIGN CHARACTERISTICS

Input Power 115 VAC, 60 Hz

PHYSICAL CHARACTERISTICS

Width	19.00"	48.3 cm
Height	6.97"	17.7 cm
Depth	8.49"	21.6 cm
Weight	16.5 lbs	7.5 kg
Shipping Weight	19 lbs	8.17 kg

MOUNTING INFORMATION



DYNALEC
CORPORATION

87 WEST MAIN STREET
SODUS, NEW YORK 14551

TELEPHONE 315-483-69
or 716-546-8168
CABLE DYNALEC SODUS
TELEX 510 250 2382