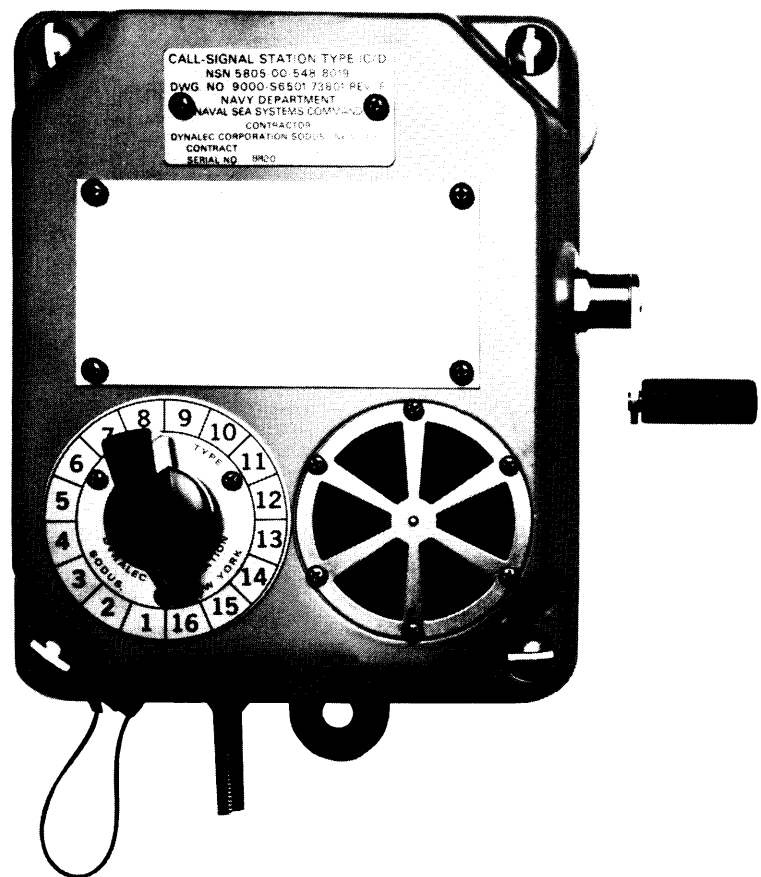


INSTRUCTIONS FOR CALL SIGNAL STATION TYPE IC/D



CALL-SIGNAL STATION TYPE IC/D
NSN 5805 00 548 8000
DWG NO 9000 58501 72501 REV 1
NAVY DEPARTMENT
NAVAL SEA SYSTEMS COMMAND
CONTRACTOR
DYNALEC CORPORATION SODUS, N.Y. 14551
CONTRACT
SERIAL NO 98400

1 JUNE 1990



ELECTRONIC SYSTEMS - METAL FABRICATION

Mailing Address
P.O. BOX 188
SODUS, N.Y. 14551

Offices/Plant
87 WEST MAIN ST.
SODUS, N.Y. 14551

Telephones
(315) 483-6923
(716) 546-8168
TWX 510-250 2382

DESCRIPTION

The IC/D Call-Signal Station (Dynalect Corporation part number 702019-267) is a sound powered intercommunication equipment designed for shipboard installation. The IC/D station enables two-way net communication with up to sixteen other IC/D stations. This unit contains a hand operated magneto generator which when operated activates a howler or call-signal light at the selected station. The unit requires an accessory handset (H-203/U) or headset-chestset (H-200/U) for operation. The accessory may be hard wired to the IC/D station or connected to the station's accessory jack. The IC/D is designed for bulkhead mounting. Mounting brackets are located at the rear of the unit.

General specifications:

Generator:

Hand Crank Torque:	10 inch-lbs., max.
Output Voltage:	35 VAC
Howler Output:	95 dB, min. @ 260 rpm
	90 dB, min., between 230 - 242 rpm

Frequency:	949 Hz at 240 rpm
	998 Hz at 242 rpm
	1017 Hz at 260 rpm

Overall Dimensions:

Height:	8.69 inches (22.1 cm)
Width:	6.56 inches (16.7 cm)
Depth:	5.75 inches (14.6 cm)

Weight:

Uncrated:	8 pounds (3.7 kg)
Crated:	10 pounds (4.6 kg)

OPERATION

To operate the IC/D station, connect an accessory handset or headset-chestset to unit's accessory jack. (If the IC/D station contains a pre-connected accessory, utilize this accessory). Select station with which communication is desired by rotating select switch to the appropriate position. Signal (ring) selected station by operating generator hand crank for 3 to 5 seconds. Press and hold press-to-operate switch on accessory and conduct communication. Release press-to-operate switch when communication is complete.

MAINTENANCE

The only maintenance required for the IC/D Call-Signal Station is periodic cleaning and inspection.

TROUBLESHOOTING

Should the IC/D station fail to operate properly, replace the accessory with one known to be in operable condition and recheck operation. Should unit fail to operate properly, check wiring for open circuits. Perform continuity checks between accessory jack and termination points within the IC/D station, and check rotary switch with continuity tester to assure that switch functions properly. (See schematic and wiring diagrams on pages 3 and 7, respectively).

REPAIR PARTS

All repair parts for the IC/D call-signal station are listed on the assembly drawing on page 4.

INSTALLATION

The IC/D Call-Signal Station is mounted to the bulkhead at approximately 66 inches from the deck. Mounting is accomplished using hardware supplied the installing activity. Three 3/8-inch bolts with flat-washers and lockwashers are recommended. Refer to assembly drawing for mounting dimensions. Access to unit's terminal boards for installation wiring is gained by loosening and removing the screws in each of the four corners of the front panel of the IC/D. See the assembly drawing on page 4.

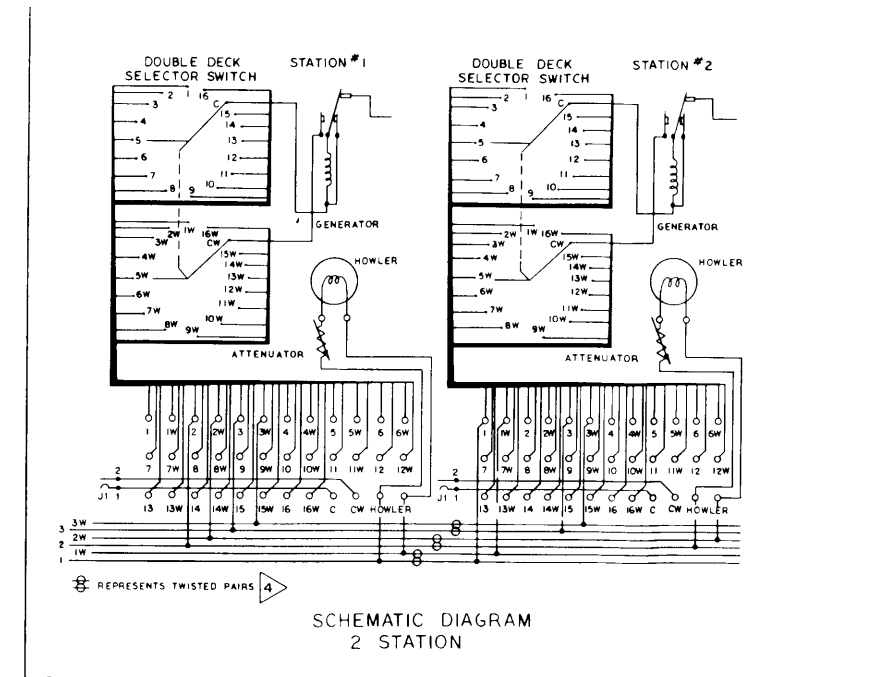
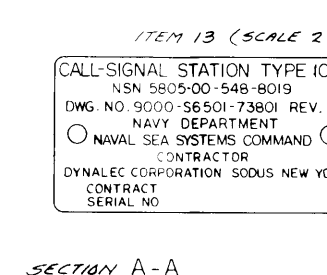
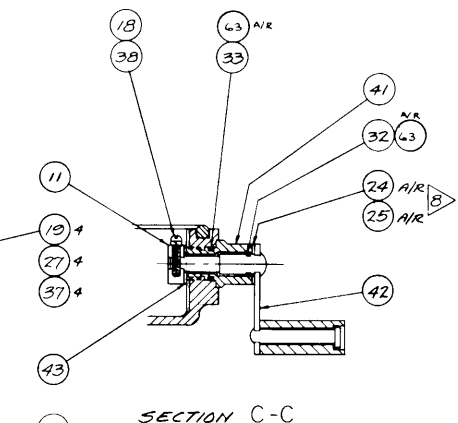
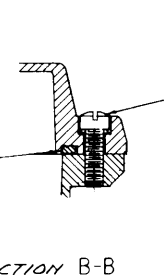
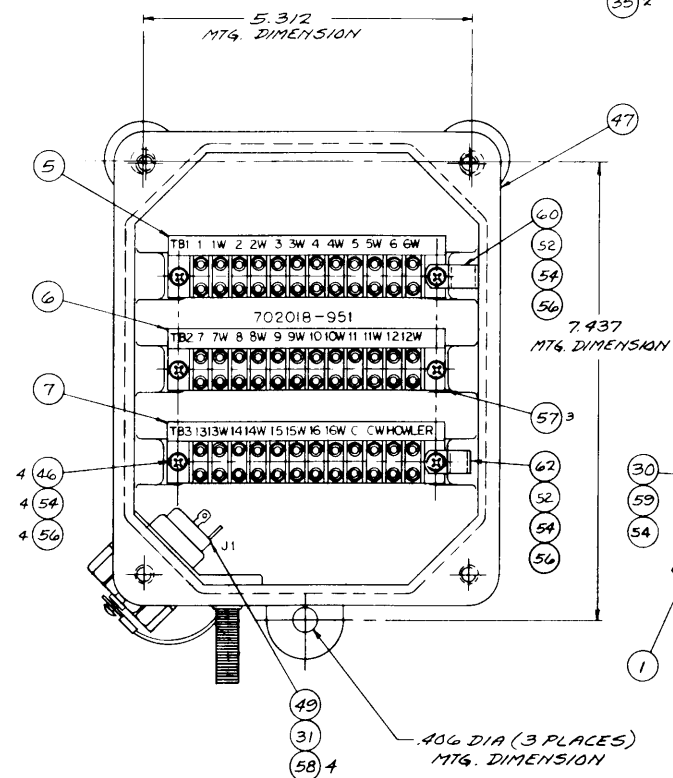
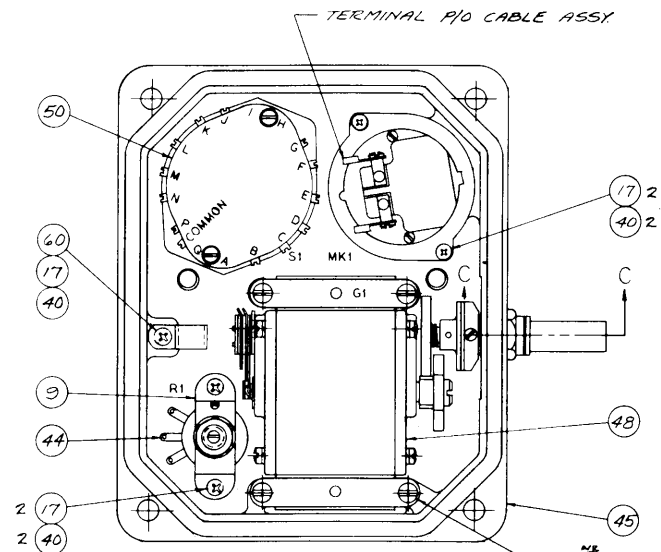
CAUTION

The front panel has an O-ring seal and interconnecting wires to the terminal boards mounted in the base of the unit. Use care not to damage to O-ring seal or electrical connections when removing the front panel.

Mark and drill unit's case as required to accommodate appropriate size stuffing tube for interconnecting cable. Install stuff tube in hole. Remove stuffing tube cap from stuffing tube and draw cable through cap and through stuffing tube packing to terminal boards inside case. Tighten stuffing tube cap. Remove cable sheath, and cut and strip wires as required to make each connection. Make connections to terminal boards as required for each installation. See Installation Wiring Diagram on page 8. When installation wiring is complete, replace front panel.

NOTES:

1. TERMINAL TUBES SHALL BE FURNISHED AND INSTALLED BY THE INSTALLING ACTIVITY.
2. TERMINAL USED TO CONNECT THE SHIPS WIRING TO THE STATIONS SHALL BE A SOLDERLESS TYPE AND ABLE TO PASS A #5 SCREW, SUPPLIED BY THE INSTALLING ACTIVITY.
3. STATION PLATE SHALL BE MARKED BY THE INSTALLING ACTIVITY.
4. TWISTED PAIRS MUST BE USED AS INTERSTATION WIRING TO PREVENT CROSSTALK BETWEEN HOWLERS.
5. ALL ELECTRICAL CIRCUITS ARE INSULATED FROM CASE COVER AND GROUND.
6. ENCLOSURES SHALL BE FINISHED IN ACCORDANCE WITH REQUIREMENTS FOR PAINTING CONTAINED IN SPEC MIL-I-983.
7. CONNECT S.P. TELEPHONE PANEL MOUNTED JACK TO "C" & "CW" TERMINALS ON TERMINAL BOARD.
8. SELECT PROPER THICKNESS WASHER AT ASSEMBLY TO CONTROL END PLAY IN GENERATOR CRANK ASSY.

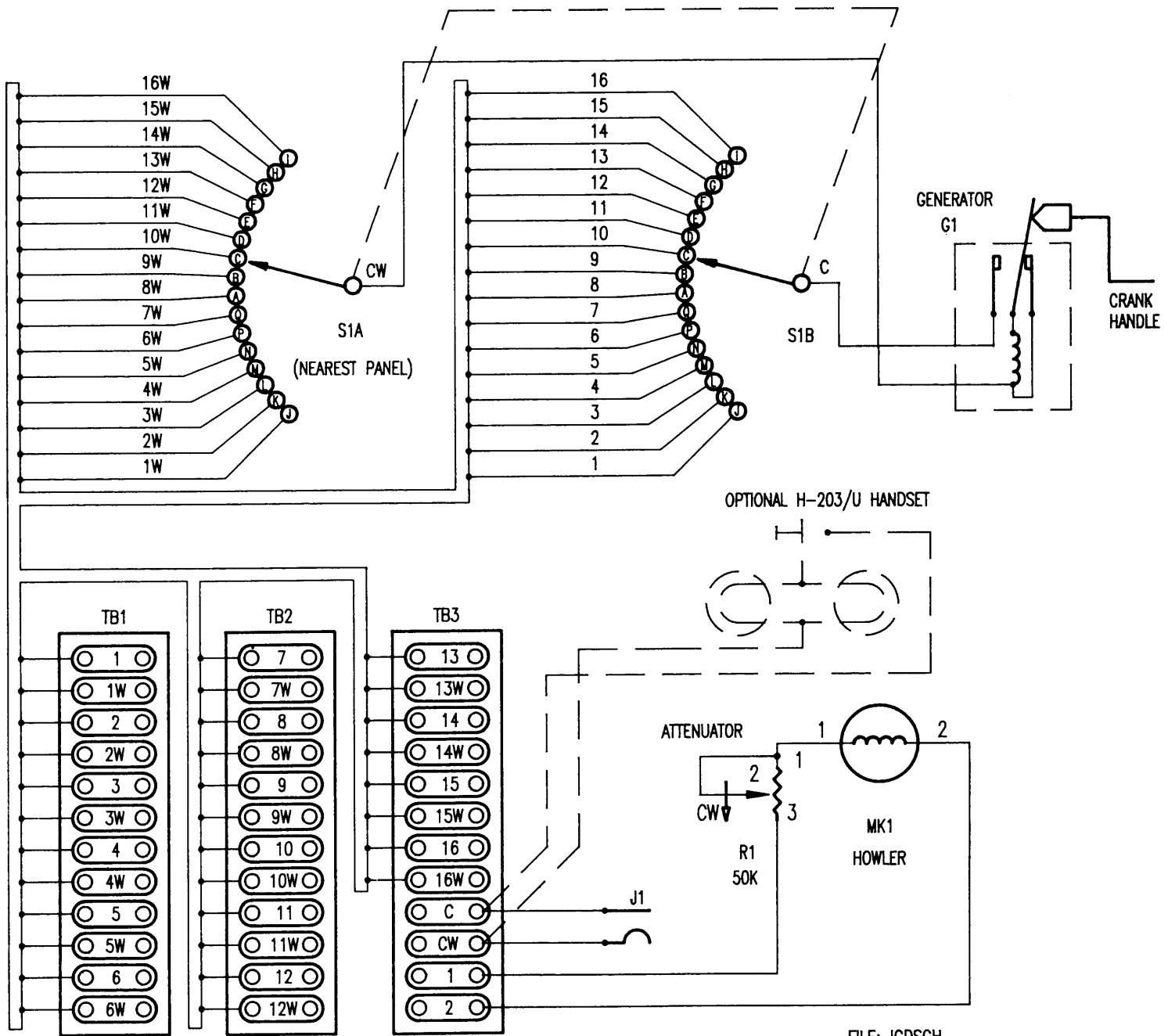


ITEM 13 (SCALE 2:1)

CALL-SIGNAL STATION TYPE IC/D
NSN 5805-00-548-8019
DWG. NO. 9000-56501-73801 REV. F
NAVY DEPARTMENT
NAVAL SEA SYSTEMS COMMAND
CONTRACTOR
DYNALEC CORPORATION SODUS NEW YORK
CONTRACT SERIAL NO.

PARTS LIST

ITEM	DESCRIPTION	QTY	FSCM	MFR. PART NUMBER
1	Cap, Dust; with Safety Cable	1	12763	65002-033
2	Howler Guard Assembly	1	12763	65002-226
3	Cable Guard Assembly	1	12763	65002-232
4	Washer	1	12763	701002-643
5	Marker Strip, TB1	1	12763	65002-244
6	Marker Strip, TB2	1	12763	65002-245
7	Market Strip, TB3	1	12763	65002-247
8	Grommet, .250 ID	1	12763	701000-339
9	Attenuator Strap	1	12763	701000-613
10	Howler Clamp	1	12763	701000-607
11	Insulation Coupling	1	12763	701000-609
12	Station Plate	1	12763	701000-612
13	Nameplate	1	12763	701000-613
14	O-Ring; 6.975 I.D. x .210 Thk; MS28775-365	1	96906	12610-144
15	Howler Horn	1	12763	701000-659
16	Screw, Pnh, Xrec; 10-24 x 5/16; MS51957-60	1	96906	12189-022
17	Screw, Pnh, Xrec; 8-32 x 3/8; MS51957-43	5	96906	12130-002
18	Screw, Filh, Slt; 5-40 x 1/2	1	12763	701002-434
19	Screw, Filh, Slt; 5/16-18 x 1.00	4	12763	701002-438
20	Screw, Filh, Slt; 10-24 x 1/2	4	12763	12187-003
21	Screw, Filh, Slt; 5-40 x 3/8	3	12763	12199-002
22	Screw, Pnh, Xrec; 6-32 x 1/4; MS51957-26	6	96906	12119-001
23	Screw, Pnh, Xrec; 4-40 x 3/16; MS51957-12	9	96906	12108-021
24	Washer, .318 I.D. x .625 O.D. x .018 Thk	A/R	12763	701002-645
25	Washer, .318 I.D. x .625 O.D. x .010 Thk	A/R	12763	701002-646
26	Cable Assembly	1	12763	702019-259
27	Washer, Lock, 5/16	4	12763	701002-751
30	Switch Knob	1	12763	701003-047
31	O-Ring; .984 I.D. x .139 Thk; MS28775-214	1	96906	12610-048
32	O-Ring; .239 I.D. x .070 Thk; MS28775-010	1	96906	12610-034
33	O-Ring; .364 I.D. x .070 Thk; MS28775-012	1	96906	12610-036
34	O-Ring; 1.859 I.D. x .139 Thk; MS28775-225	1	96906	12610-059
35	Clamp, Generator Assembly	2	12763	701004-640
36	Plate, Dial	1	12763	701006-191
37	Bushing	4	12763	701006-295
38	Washer, Lock	1	12763	701008-841
40	Washer, Int. Tooth, No. 8; MS35333-72	5	96906	12201-004
41	Bushing and Bearing Assembly	1	12763	701021-582
42	Handle Assembly, Generator	1	12763	701021-583
43	Washer, .258 I.D. x .625 O.D. x .010 Thk	1	12763	701021-584
44	Attenuator; RV4NAYS503E (MIL-R-94)	1	81349	702001-301
45	Cover	1	12763	702006-112
46	Screw, Pnh, 6-32 x 1/2; MS51957-30	4	96906	12119-003
47	Case	1	12763	702018-950
48	Signal Generator Assembly (G1)	1	12763	702019-300
49	Jack, Panel Mtg	1	12763	65002-004
50	Rotary Switch, 16 Position, 2 deck	1	12763	702020-030
51	Howler	1	12763	702020-056
52	Screw, Pnh, Xrec; 6-32 x 5/8; MS51957-31	2	96906	12119-004
53	Washer, Lock, No. 4; MS35338-135	9	96906	12203-002
54	Washer, Lock, No. 6; MS35338-136	13	96906	12203-003
55	Washer, Lock, No. 10; MS35338-138	5	96906	12203-005
56	Washer, Flat, No. 6; MS15795-805	6	96906	12211-005
57	Terminal Board; 26TB12	3	96906	14088-005
58	Screw, Filh, Xrec; 6-32 x 5/16; MS51959-34	4	96906	12632-022
59	Screw, Filh, Xrec; 6-32 x 1.00	1	12763	12652-007
60	Clamp, Loop, 5/16 Dia.	2	12763	12510-004
61	Washer, Flat, No. 10; MS15795-808	1	96906	12211-008
62	Clamp, Loop, 3/16 Dia.	1	12763	12510-002
63	Silicon Grease	A/R	12763	17004-012

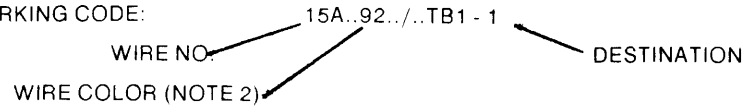


FILE: ICDSCH

CALL - SIGNAL STATION, TYPE IC/D: SCHEMATIC DIAGRAM

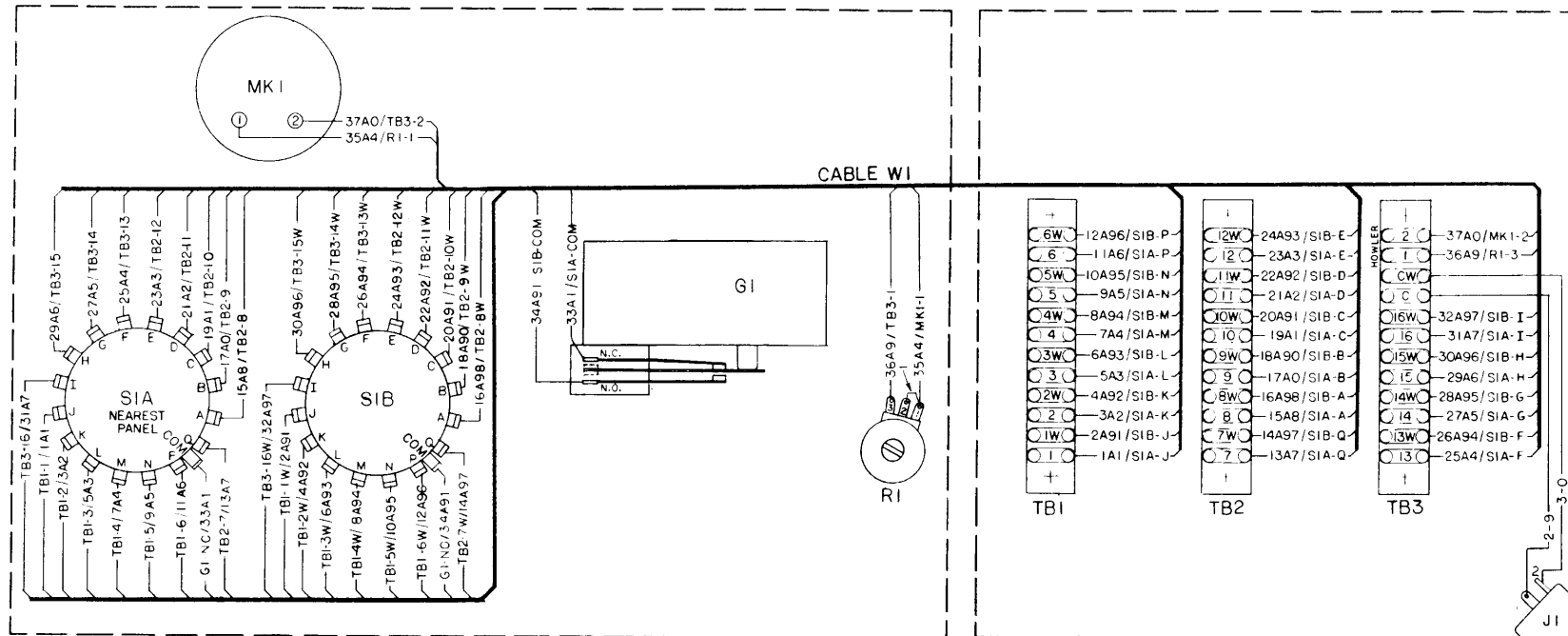
NOTES:

1. WIRE MARKING CODE:



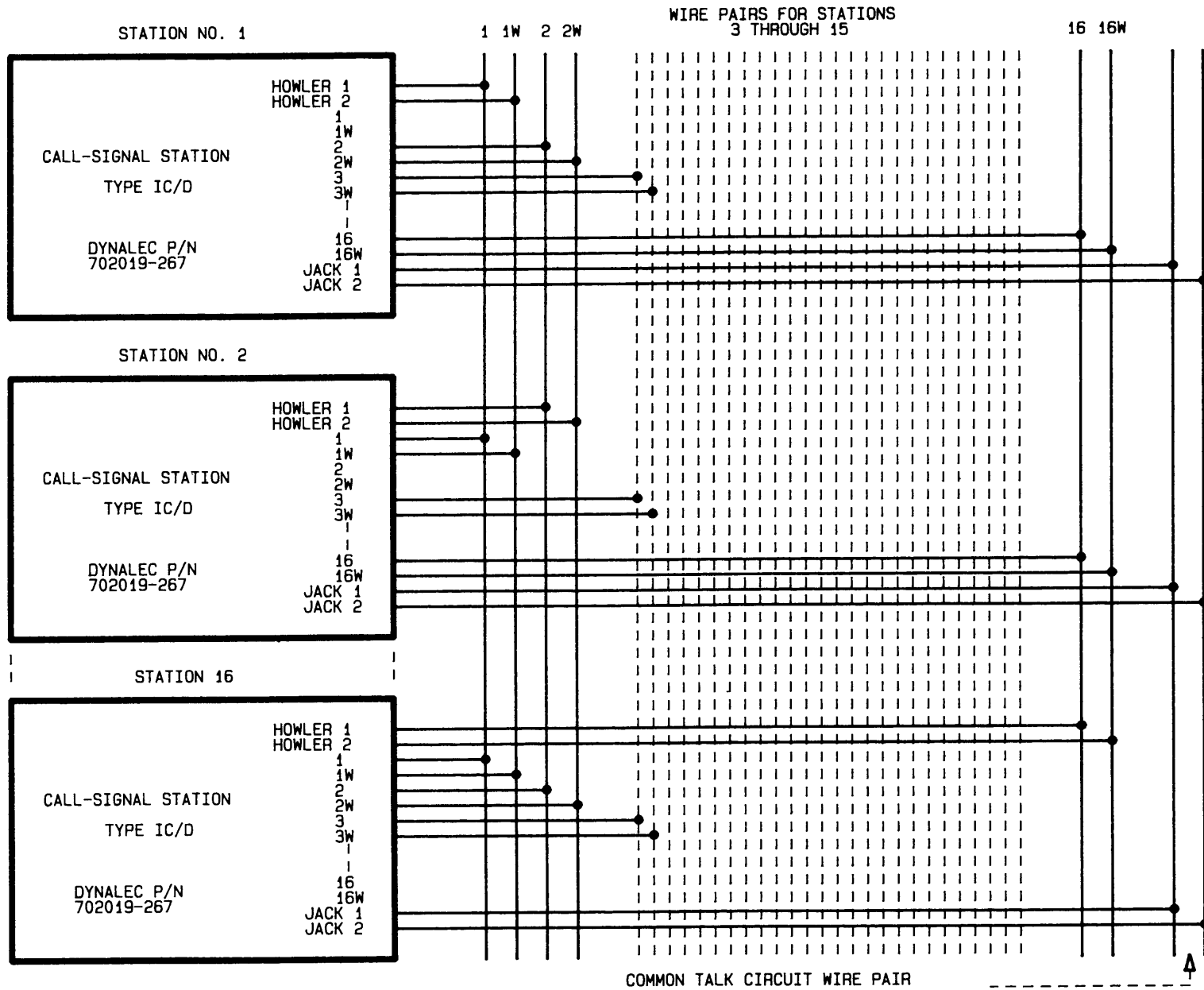
2. WIRE COLOR CODE:

NO.	BASE COLOR	TRACER
0	BLACK	-
1	BROWN	-
2	RED	-
3	ORANGE	-
4	YELLOW	-
5	GREEN	-
6	BLUE	-
7	VIOLET	-
8	GRAY	-
9	WHITE	-
90	WHITE	BLACK
91	WHITE	BROWN
92	WHITE	RED
93	WHITE	ORANGE
94	WHITE	YELLOW
95	WHITE	GREEN
96	WHITE	BLUE
97	WHITE	VIOLET
98	WHITE	GRAY



CALL - SIGNAL STATION, TYPE IC/D: INTERNAL WIRING DIAGRAM





CALL - SIGNAL STATION, TYPE IC/D: TYPICAL INSTALLATION WIRING